



established 1919



Chartered Surveyors
Residential Sales + Lettings
Commercial Sales + Lettings
Property Management
Surveys + Professional

40 Clarence Street,
Southend-On-Sea, SS1 1BD

t: 01702 433663

e: residential@sorrellproperty.co.uk

www.sorrellproperty.co.uk



4 bedroom House - Semi-Detached for sale, Bournemouth Park Road, Southend-On-Sea, £350,000 - **SOLD STC**

Full description

Sorrell are favoured with the instructions to offer for sale this investment opportunity, of two self contained flats currently producing a income of £17,040 per annum both let on assured shorthold tenancies. which are holding over Number 9 is a one bedroom ground floor flat and number 9a is a two bedroom first floor flat. Further details available on request.

Call us on **01702 433663** to view this property or visit sorrellproperty.co.uk for more details



Features

Number 9

Ground floor apartment Spacious entrance hall, radiator, doors off on to

Lounge - 6.32 x 3.27 (20'8 x 10'8)

Double glazed french doors leading on to rear garden, fire place, radiator

Kitchen - 3.32 x 2.27 (10'10 x 7'5)

Basic fitted units, sink unit, door through to large lean to with walk in cupboard housing gas combination boiler.

Bedroom - 4.77 x 3.89 (15'7 x 12'9)

Double glazed bay window to front, radiator.

Bathroom

Panelled bath with shower over, wash hand basin, double glazed opaque window to side.

Separate W.C.

Opaque glazed window to side.

West Backing Rear Garden

Number 9a

Stairs to first floor landing, radiator, built in cupboard, doors off onto:

Lounge/ Kitchen - 5.15max x 4.74 to bay (16'10 ax x 15'6 to bay)

Lounge area. Double glazed bay window to front, vinly flooring, radiator: Kitchen area Laminate flooring, cupboard and draw base units, eye level wall cupboards , rolled top work surface, tiled splash backs, stainless steel sink unit recess for cooker and fridge/ freezer, double glazed window to front:

Bedroom One - 5.70 x 3.26 (18'8 x 10'8)

Doubel glazed windows to rear, carpeted, radiator:

Bedroom Two - 3.74 x 3.33 to alcove (12'3 x 10'11 to alcove)

Double glazed windows to rear, carpeted, fitted cupboard housing boiler, radiator:

Lobby

Vinly flooring, plumbing for washing machine, double glazed window to side, door through to:

Bathroom - 2.47 x 2.35 (8'1 x 7'8)

Opaque double glazed window to side, panalled bath with electric shower over, pedestal wash hand basin, vinyl flooring, tiled splash backs, radiator:

Separate wc

Laminate flooring, part tiled walls, low level wc, opaque double glazed window to side



Call us on **01702 433663** to view this property or visit [sorrellproperty.co.uk](https://www.sorrellproperty.co.uk) for more details



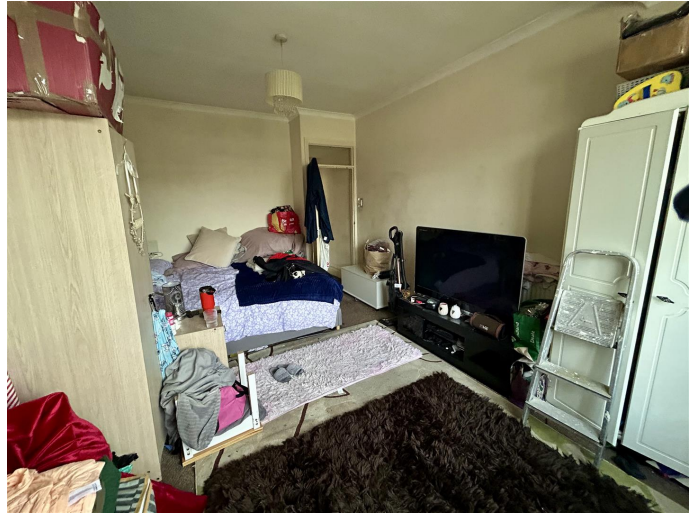
These particulars do not constitute an offer or contract, the purchaser should satisfy himself independently as to the accuracy of the measurements, description and statements contained herein. All negotiations are to be conducted via Sorrell



Call us on [01702 433663](tel:01702433663) to view this property or visit sorrellproperty.co.uk for more details



These particulars do not constitute an offer or contract, the purchaser should satisfy himself independently as to the accuracy of the measurements, description and statements contained herein. All negotiations are to be conducted via Sorrell



Call us on **01702 433663** to view this property or visit sorrellproperty.co.uk for more details



These particulars do not constitute an offer or contract, the purchaser should satisfy himself independently as to the accuracy of the measurements, description and statements contained herein. All negotiations are to be conducted via Sorrell